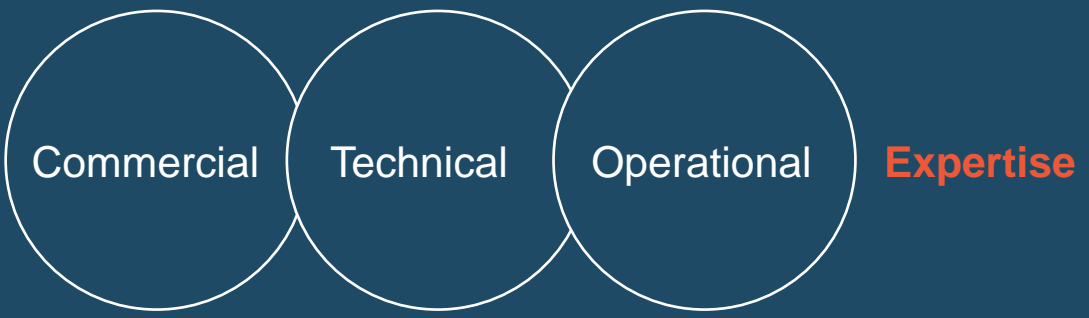


**Sproule** is a comprehensive consultancy that navigates the technical, commercial, and operational elements that underpin decision-making within the energy sector.



**Reservoir Services**



**Geothermal**



**Energy Advisory**



**Asset Management**

**Geothermal Expertise**

**Strategic Advisory and Due Diligence**

**Geothermal Feasibility Assessments:** site selection, geothermal concept assessment, geothermal resource potential evaluation, economic valuation, LCOE calculations

**Technical Due Diligence:** independent project review, red flag reports, SWOT analysis, Lender's Technical Advisor (LTA)

**Strategic Advice:** risk characterization, Field Development Planning (FDP), risk mitigation strategies, guidance for project organization

**Permits and Grants:** evaluation of funding opportunities, subsidy applications, permit submissions

**Geoscience**

**Geological Evaluations:** mapping, aggregation of geologic databases, GIS analysis

**Geomodelling:** seismic interpretation, development and quality control for static geomodels, seal integrity analysis, fault and fracture models (Petrel)

**Petrophysical Analysis:** offset well analysis, well-log interpretation

**Reservoir Simulations:** probabilistic modelling, dynamic models, history matching (CMG, Eclipse)

**Geothermal Operations Management**

**Well Delivery Projects:** well and completion design, drilling and data acquisition programs, well test analysis

**Production and Injection Optimization:** production monitoring, data analysis and diagnostics, well integrity management, corrosion and scaling, artificial lift (ESP) design

**Workovers and Interventions:** strategic workover concepts, well engineering, project management and site supervision

**Geohazard Management**

**Geohazard Risk Analysis:** site evaluation, seal integrity assessment

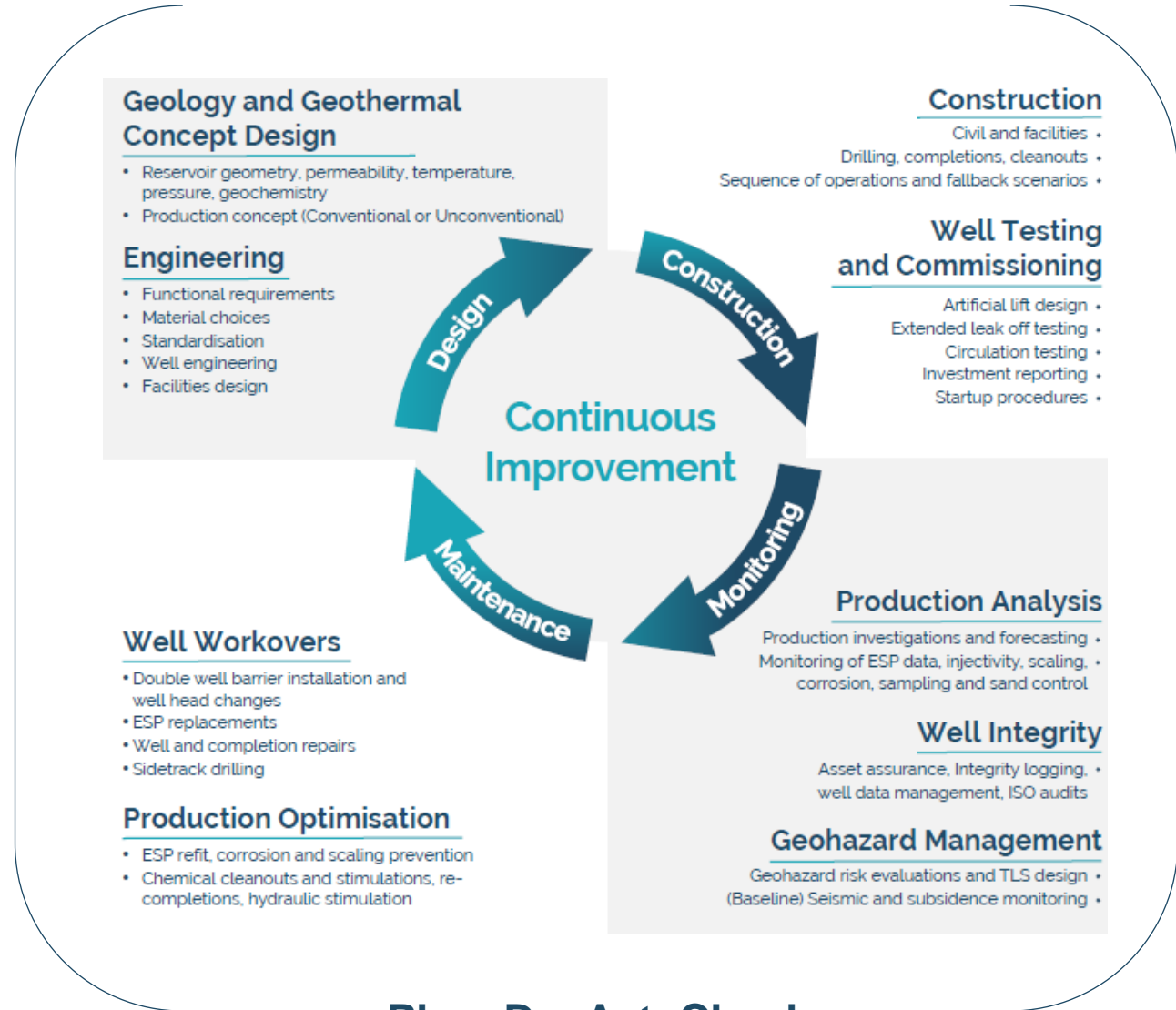
**Baseline Monitoring:** seismic activity and subsidence monitoring, correlation with production and geothermal operations data

**Seismic Risk Management Plan:** Traffic Light System (TLS) design, stakeholder management

**Project Management:** local geohazard monitoring network

# Continuous Improvement

Operations Excellence

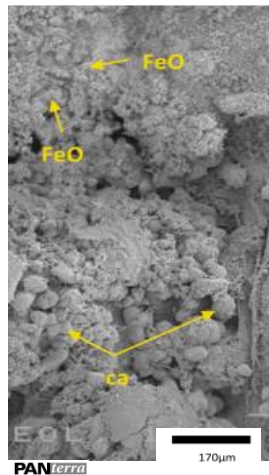
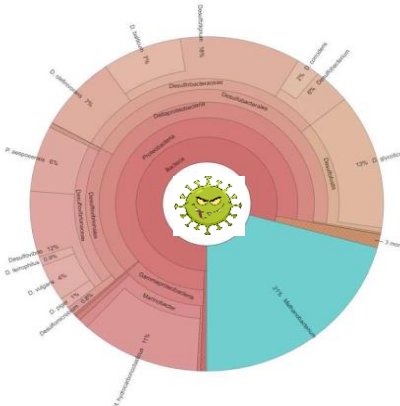


Plan, Do, Act, Check

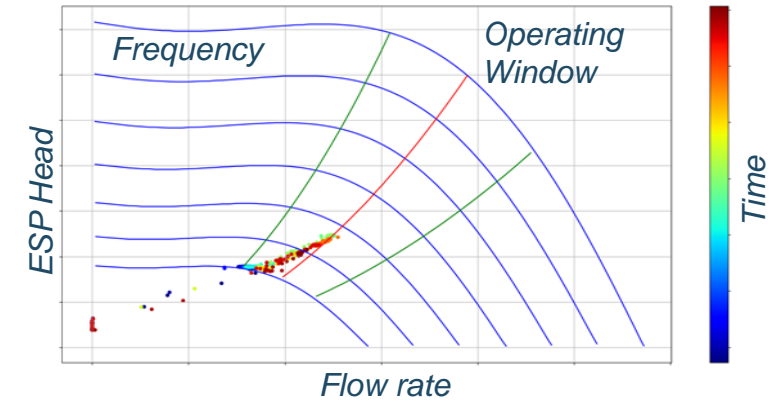


# Production Assurance in saline aquifers

Well integrity and production reliability



- Corrosion
- Scaling
- Microbiology
- Inhibitor failures
- Injectivity clogging



- Production data analysis
- ESP Pump improvements
- Relining with glassfibre pipe

